

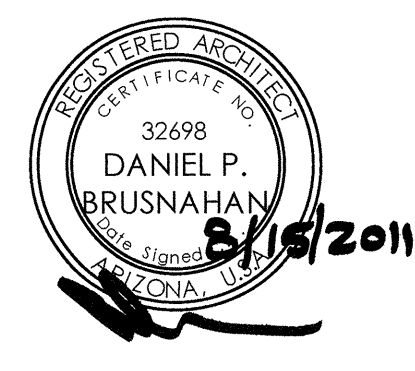
# Rock Point Church

N.E.C. of POWER RD. & IVY LANE

Queen Creek, Arizona

## ROCK POINT CHURCH

16928 East Mews Road, Queen Creek AZ 85242  
480-988-5391 p  
480-988-5745 f



Expires 8/30/2013



**TODD & ASSOCIATES, INC.**  
Critical Thinking • Creative Design

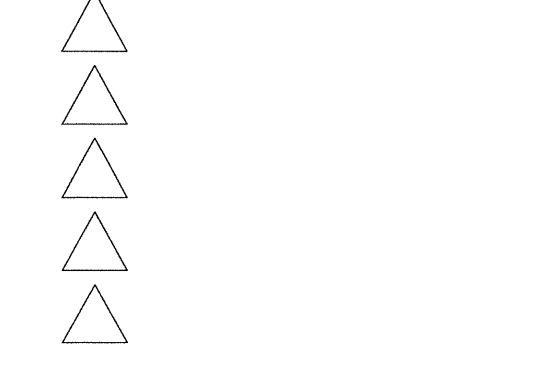
Architecture Planning  
Landscape Architecture  
4019 North 44th Street  
Phoenix, AZ 85018  
602-952-8280p 602-952-8995f  
www.toddassoc.com

Copyright 2009 Todd & Associates, Inc.

08-15-11  
1st Town Submittal  
CD Phase

Proj Mgr. CG  
Dwn By: SD

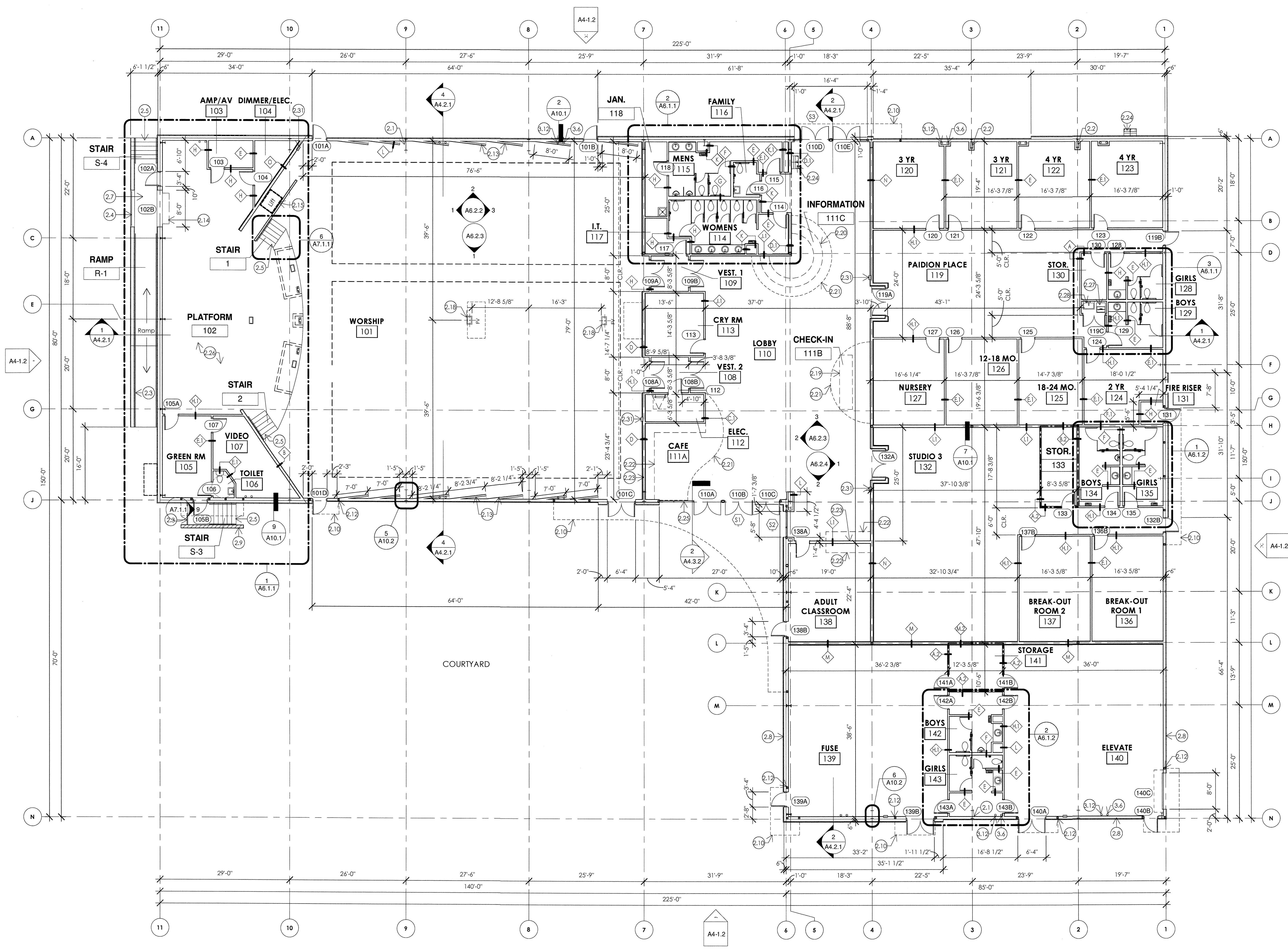
Rev. Date: Description:



"PROMPT PAYMENT NOTICE"  
The Owner is familiar with the "Arizona Prompt Payment Law" and payments will comply with the 30 day billing cycle.

First Floor Plan

# A2.1.1



- KEYNOTES**
- 2.1 EXPOSED PREFABRICATED STEEL COLUMN - COORDINATE WITH METAL BUILDING SUPPLIER
  - 2.2 STEEL COLUMN ENCLOSED WITH MTL. STUD AND GYP BOARD - COORDINATE WITH METAL BUILDING SUPPLIER
  - 2.3 METAL RAILING
  - 2.4 REMOVABLE GUARDRAIL
  - 2.5 CONCRETE STAIRS
  - 2.7 LOADING DOCK
  - 2.8 CEMENT STUCCO SYSTEM ON EXTERIOR SHEATHING ON 6" METAL STUD
  - 2.9 STUCCO SYSTEM ON CMU
  - 2.10 OUTLINE OF STEEL CANOPY ABOVE
  - 2.11 SERVICE ENTRANCE SECTION (S.E.S.) - REFER TO ELECTRICAL
  - 2.12 TUBE STEEL COLUMN - REFER TO STRUCTURAL
  - 2.13 SIDE REFLECTOR METAL STUD WALL - REFER TO A/V DRAWINGS
  - 2.14 INSULATED OVERHEAD COILING DOOR
  - 2.15 LIFT
  - 2.16 MOBILE A/V BOOTH (PRIMARY LOCATION) O.F.O.I.
  - 2.18 FLOOR VAULT
  - 2.19 MOBILE CHECK-IN STATION O.F.O.I.
  - 2.20 INFORMATION DESK O.F.O.I.
  - 2.21 OUTLINE OF SUSPENDED GYP. BOARD CEILING ABOVE
  - 2.22 MILLWORK O.F.O.I.
  - 2.23 PLUMBING SUB-OUT FOR FUTURE SINK - REFER TO PLUMBING
  - 2.24 DRINKING FOUNTAIN - REFER TO PLUMBING
  - 2.25 ALUMINUM STOREFRONT SYSTEM
  - 2.26 36" HIGH CONCRETE PLATFORM - REFER TO ROOM FINISH SCHEDULE
  - 2.27 STACKED WASHER AND DRYER
  - 2.28 SINK - REFER TO PLUMBING
  - 2.31 SEMI-RECESSED FIRE EXTINGUISHER CABINET
  - 3.6 ROOF DRAIN
  - 3.12 OVERFLOW DRAIN

- GENERAL NOTES**
1. ALL DIMENSIONS ARE TO FACE OF STUD/CMU U.N.O.
  2. BUILDING TO BE EQUIPPED WITH NFPA 13 SPRINKLER SYSTEM
  3. ALL LOCATIONS AND SIZE OF PRE-MANUFACTURED STEEL COMPONENTS WILL BE COORDINATED WITH METAL BUILDING SUPPLIER'S DRAWINGS.

- LEGEND**
- NOTE: REFER TO SHEET A0.1 FOR SYMBOLS NOT SHOWN BELOW
  - NON-RATED SMOKE PARTITION (PER IBC SECTION 508.2.2.1)
  - 2X4 OR 2X6 STUD WALL
  - CMU WALL
  - ELEVATION NUMBER
  - BUILDING ELEVATION INDICATOR
  - SHEET NUMBER

Floor Plan  
3/32" = 1'-0"

