

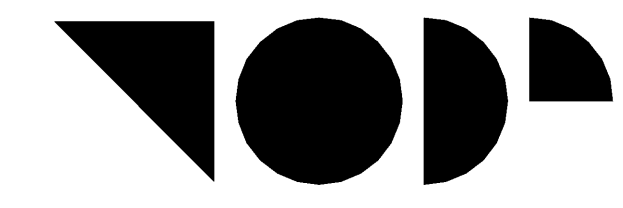
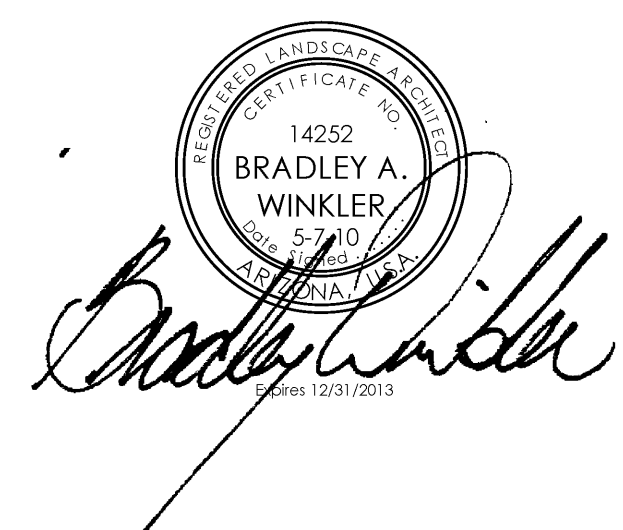
Rock Point Church

N.E.C. of POWER RD. & IVY LANE

Queen Creek, Arizona

ROCK POINT CHURCH

16928 East Mews Road, Queen Creek AZ 85242
480-988-5391 p
480-988-5745 f



TODD & ASSOCIATES, INC.
Critical Thinking • Creative Design

Architecture Planning
Landscape Architecture

4019 North 44th Street
Phoenix, AZ 85018
602-952-8280p 602-952-8995f
www.toddassoc.com

Copyright 2009 Todd & Associates, Inc.

PROJECT

CLIENT

SEAL

CONTACT

DATA

08-15-11
1st Town Submittal
CD Phase

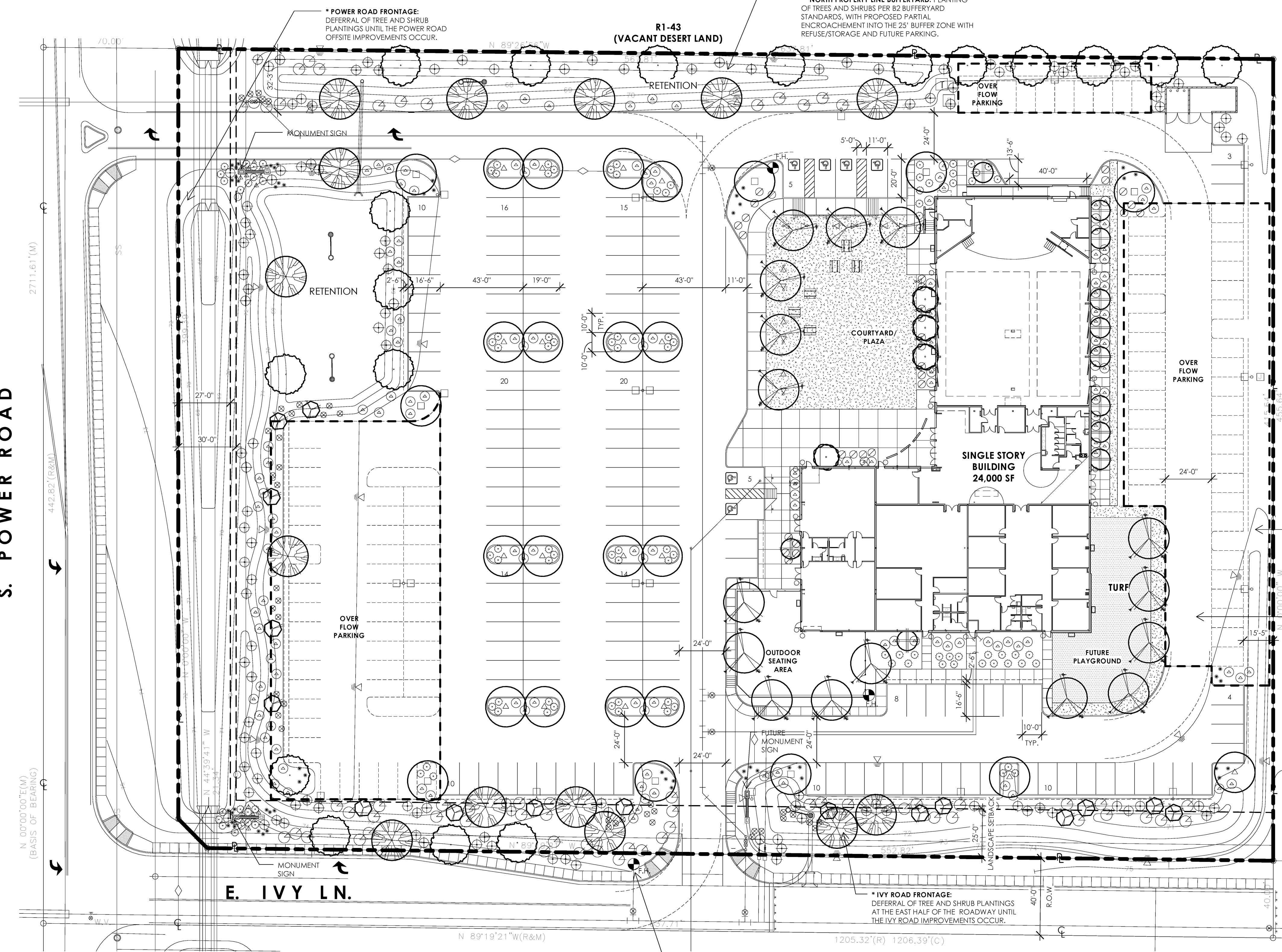
Proj Mgr: CG
Dwn By: DSS

Rev.	Date:	Description:

"PROMPT PAYMENT NOTICE"
The Owner is familiar with the "Arizona Prompt Payment Law" and payments will comply with the 30 day billing cycle.

Planting Plan

L1.1



Botanical Name	Common Name	Cal.	Size	Qty.	Emitter Schedule
Trees					
Caesalpinia hybrid 'Sierra Sun'	SIERRA SUN	1-1/2"		11	2-XBT-20-6, 20 GPH
Cercidium hybrid 'Desert Museum'	DESERT MUSEUM PALO VERDE	1-1/2"		14	2-XBT-20-6, 20 GPH
Chilatapa tashkentensis 'Pink Dawn'	Pink Dawn Chilatapa	1-1/2"		4	2-XBT-20-6, 20 GPH
Pithecellobium flexicaule	TEXAS EBONY	.75"		8	2-XBT-20-6, 20 GPH
Prosopis chilensis	THORNLESS CHILEAN MESQUITE	1-1/2"		18	2-XBT-20-6, 20 GPH
Quercus virginiana	LIVE OAK	.75"		18	2-XBT-20-6, 20 GPH
Ulmus parvifolia 'Emer II'	EVERGREEN ELM	.75"		16	2-XBT-20-6, 20 GPH
Shrubs / Groundcovers					
Euphorbia biglandulosa	Gopher Plant	1 Gal.		17	1-XBT-10PC, 1 GPH
Fouquieria splendens Engelm	Ocotillo	15 Gal.		16	2-XBT-20-6, 20 GPH
Hesperaloe parviflora 'Perpa'	Red Yucca Brakelights	5 Gal.		54	1-XBT-10PC, 1 GPH
Lantana montevidensis	Purple Trailing Lantana	1 Gal.		108	1-XBT-10PC, 1 GPH
Muhlenbergia capillaris 'Regal Mist'	Regal Mist Deer Grass	5 Gal.		41	1-XBT-10PC, 1 GPH
Myoporum parvifolium	Prostrate Myoporum	5 Gal.		61	1-XBT-10PC, 1 GPH
Rosmarinus officinalis 'Huntington Carpet'	Trailing Rosemary	5 Gal.		30	1-XBT-10PC, 1 GPH
Tecoma hybrid 'Sierra Apricot'	Esperanza	5 Gal.		150	1-XBT-10PC, 1 GPH
Tecoma x 'Orange Jubilee'	Orange Jubilee	5 Gal.		126	1-XBT-10PC, 1 GPH
MISCELLANEOUS					
ALL NON-TURF LANDSCAPE & HARBOR	Decomposed granite of interior areas: 2" depth of 1/2" screened Saddleback Brown				
	1/4" minus Stabilized decomposed granite, Color: Saddleback Brown				
	4" depth @ Ped, Walkway				
	1" depth @ Courtyard Plaza				
	Cynodon dactylon 'Midiron'	Hybrid Bermuda turf	Sod	3,645 SF	

Landscape Plan
1" = 30'-0"

LANDSCAPE TYPE	TREES REQUIRED	TREES PROVIDED	SHRUBS REQUIRED	SHRUBS PROVIDED
FRONTAGE LANDSCAPE (25' or 30' Setback) 95' L.F. x 24.261 S.F.	1 TREE PER 30 FT. 95' / 30 = 32 TREES	15*	30% COVERAGE 34,453 S.F. x 30% = 10,336 S.F. 10,336 S.F. / 500 * 10 = 207 SHRUBS	SHRUBS INDICATED PER PLAN SHOW DESIGN
BUFFER YARD LANDSCAPE (25' B2 Buffer) 90' L.F. (NORTH & EAST F.L.) x 25' x 22,944 S.F.	2 EVERGREEN / 1 DECID. PER 25' 90' / 25 = 36 TREES	15**	5 SHRUBS PER TREE 36 TREE * 5 = 180 SHRUBS	INTENT FOR THIS PHASE OF DEVELOPMENT W/ DEFERRALS AS INDICATED & PROVIDED WRITTEN NARRATIVE.
PARKING LANDSCAPE LANDSCAPE AREA = 15% REQ'D. 65,756 x 15% = 9,863 S.F.	1 TREE PER 8 SPACES 159 SPACES / 8 = 20 TREES	20	30% COVERAGE 9,863 S.F. / 500 * 10 = 197 SHRUBS	
FUTURE PARKING LANDSCAPE AREA = 15% REQ'D. 25,508 x 15% = 3,826 S.F.	1 TREE PER 8 SPACES 85 SPACES / 8 = 11 TREES (NOT INCLUDED IN TOTALS)	NOT SHOWN, TO BE ADDED AS FUTURE PLAN APPROVAL.	30% COVERAGE 3,826 S.F. / 500 * 10 = 77 SHRUBS (NOT INCLUDED IN TOTALS)	
OPEN SPACE LANDSCAPE 30,385 - 9,863 S.F. = 20,522 S.F. 20,608 S.F. - 3,826 S.F. = 16,696 S.F.	1 TREE PER 500 S.F. 16,696 / 500 = 33 TREES	39	30% COVERAGE 10 SHRUBS PER 500 S.F. 16,696 / 500 * 10 = 334 SHRUBS	NOT SHOWN, TO BE ADDED AS FUTURE PLAN APPROVAL.
TOTALS:		TOTAL: 121	TOTAL: 89	TOTAL: 918

LANDSCAPE NOTES:

* POWER ROAD FRONTAGE: DEFERRAL OF TREE AND SHRUB PLANTINGS UNTIL THE POWER ROAD OFFSITE IMPROVEMENTS OCCUR.

** IVY ROAD FRONTAGE: DEFERRAL OF TREE AND SHRUB PLANTINGS AT THE EAST HALF OF THE ROADWAY UNTIL THE IVY ROAD IMPROVEMENTS OCCUR.

** NORTH PROPERTY LINE BUFFERYARD: PLANTING OF TREES AND SHRUBS PER B2 BUFFERYARD STANDARDS, WITH PROPOSED PARTIAL ENCROACHMENT INTO THE 25' BUFFER ZONE WITH REFUSE/STORAGE AND FUTURE PARKING.

** EAST PROPERTY LINE BUFFERYARD: DEFERRAL OF TREE AND SHRUB PLANTINGS UNTIL DEVELOPMENT OF THE ADJACENT PARCEL, AT WHICH TIME THE BUFFERYARD REQUIREMENTS CAN BE ESTABLISHED IF NECESSARY.

LANDSCAPE AREA TOTALS	
GROSS OPEN SPACE	77,590 S.F.
NET OPEN SPACE	77,590 S.F.

